



## Copthall Drive/Holmdene Avenue

**£1,395,000**

A stunning and spacious 4 bedroom 2 bathroom detached house situated in a prime residential road in Mill Hill and within walking distance to Mill Hill Broadway. On the ground floor there is a entrance hallway, 2 spacious reception rooms, a fully equipped kitchen/diner with direct access onto a large garden, in addition to a W/C ample storage and garage. The first floor boasts a master bedroom with en-suite, 3 further good size bedrooms and an additional bathroom. Further benefits include off-street parking for 3 cars, close to transport links, close to local schools and potential to extend stpp. Viewing Highly Recommended. Sole Agent.

### Viewing

Please contact our London Office on 020 8959 0011 if you wish to arrange a viewing appointment for this property or require further information.



4



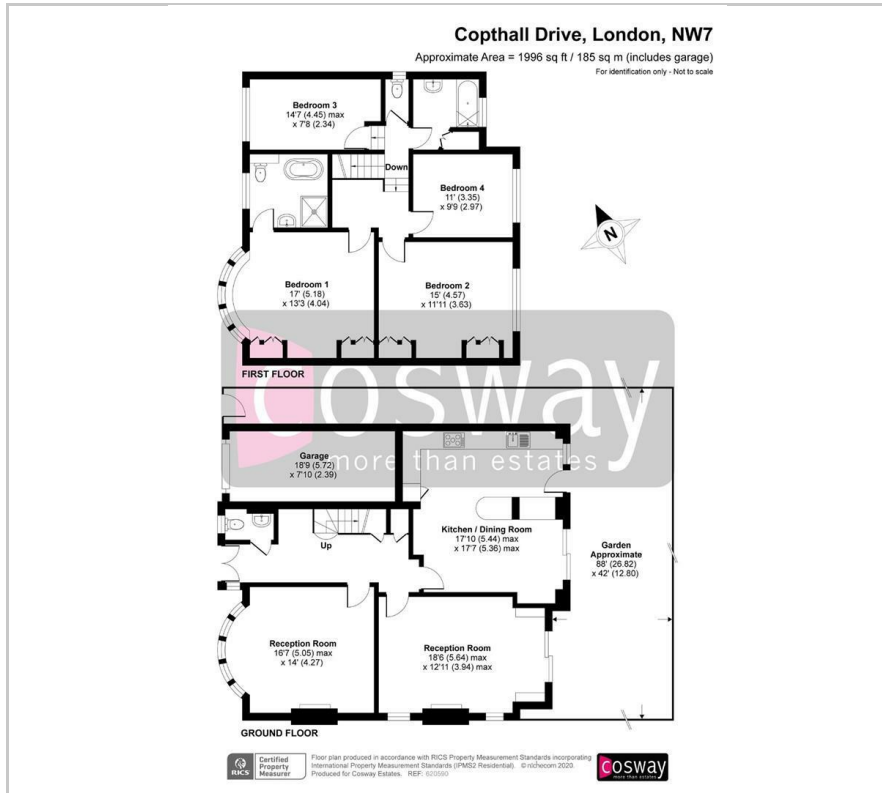
2



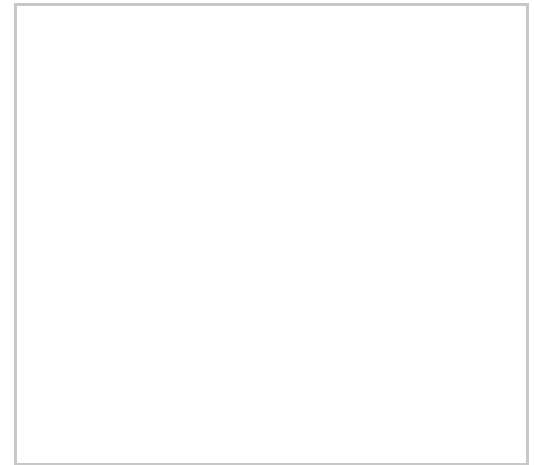
2



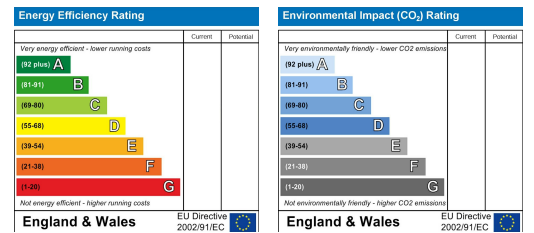
# Floor Plan



# Area Map



# Energy Efficiency Graph



These particulars, whilst believed to be accurate are set out as a general outline only for guidance and do not constitute any part of an offer or contract. Intending purchasers should not rely on them as statements of representation of fact, but must satisfy themselves by inspection or otherwise as to their accuracy. No person in this firm's employment has the authority to make or give any representation or warranty in respect of the property.